



by



PLUGR is a registered trademark of SourceOne Inc., a subsidiary of IMSCORP, Lincoln, NE.

603 "L" Street Lincoln, NE 68508 (888) 418-9065 Fax (402) 474-6604 Web Site: www.plugr.com Email: plugrsales@sourceonex.com

PARTS LIST

Model PL400B - 5.5 HP Briggs & Stratton Intek

Model PL400H - 5.5 HP Honda OHV

22" Compact Turf Aerator

Model PL410B - 5.5 HP Briggs & Stratton Intek

Model PL410H - 4.0 HP Honda OHV

22" Compact Turf Aerator

Model PL600B - 6.5 HP Briggs & Stratton Intek

Model PL600H - 5.5 HP Honda OHV

30" Compact Turf Aerator

Model PL800B - 6.5 HP Briggs & Stratton Intek

Model PL800H - 5.5 HP Honda OHV

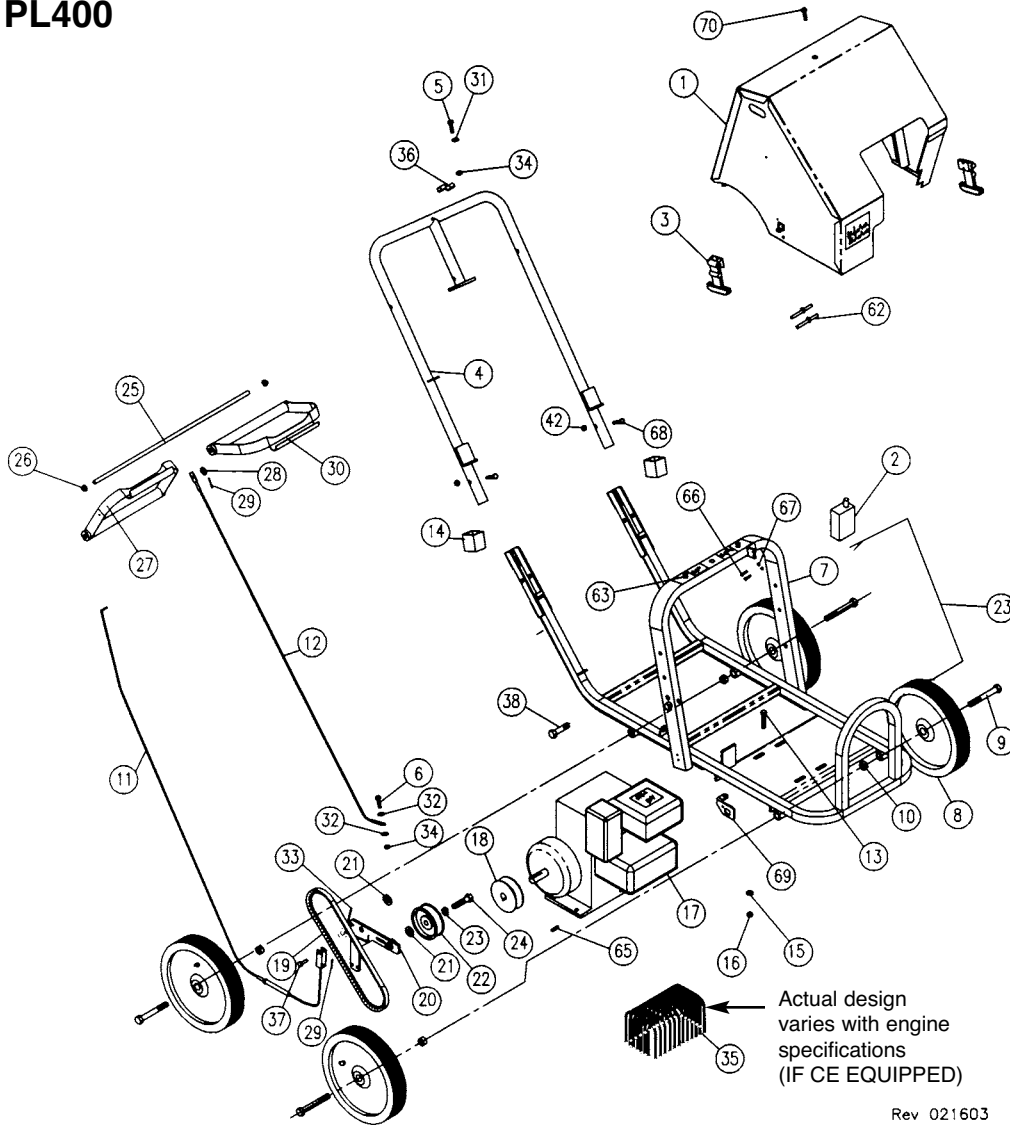
30" Compact Turf Aerator

Model PL850B - 6.5 HP Briggs & Stratton Intek

Model PL850H - 6.5 HP Honda OHV

30" Pro HD Turf Aerator

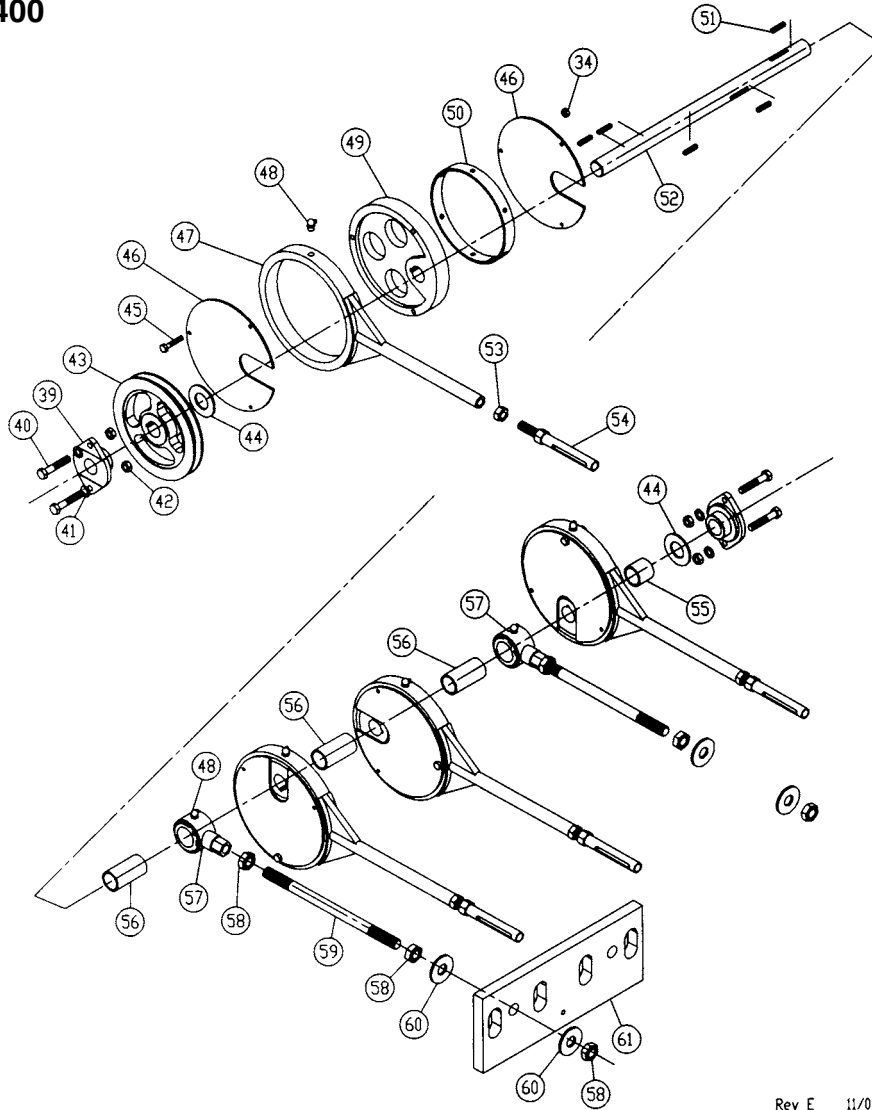
Model PL400



Rev 021603

ITEM NO.	PART NO.	NO. REQ'D	DESCRIPTION	ITEM NO.	PART NO.	NO. REQ'D	DESCRIPTION
1	1133	1	One Piece Cover	19	1073	1	V-Belt, Cogged, 38"
2	1129	1	Safety Switch	20	1137	1	Clutch Bracket
3	1003	2	Rubber Latch Kit	21	1092	1	1/2" Machine Bushing
4	1134	1	Handle	22	1022	1	Pulley, Clutch
5	1112	1	Button Head Screw, 1/4-20 x 1 1/2", SS	23	1126	1	Wiring Harness
6	1006	1	Hex Head Bolt, 1/4-20 UNC x 1 3/8"	24	1024	1	Hex Head Bolt, 1/2-13 UNC x 1 3/4"
7	1132	1	Frame w/o Handle	25	1102	1	Pivot Rod
8	1069	4	Wheel w/ Grease Fittings	26	1085	2	Retainer Cap
9	1109	4	Hex Head Bolt, 5/8-11 UNC x 4 1/2"	27	1098	1	Control Handle, Right
10	1110	4	Lock Nut, 5/8-11 UNC	28	1088	1	Flat Washer, No. 10
11	1140	1	Clutch Cable Assembly	29	1031	2	Cotter Pin, 1/16 dia x 3/4"
12	1089	1	Control Cable Assembly	30	1099	1	Control Handle, Left
13	1143	4	Hex Head Bolt, 5/16-18 UNC x 1 3/4"	31	1111	1	Belleville Washer
14	1135	2	Lock Collar	32	1091	3	Flat Washer, 1/4"
15	1015	4	Flat Washer, 5/16"	33	1138	1	Torsion Spring
16	1016	5	Lock Nut, 5/16-18 UNC	34	1029	1	Nylock Nut, 1/4-20 UNC
17	107B 107H		Engine, Briggs & Stratton 5.5HP Intek Engine, Honda 5.5HP OHV	35	112B 112H		CE Required Muffler Guard (Briggs & Stratton) (IF CE EQUIPPED) CE Required Muffler Guard (Honda) (IF CE EQUIPPED)
18	1018	1	Pulley, Engine				

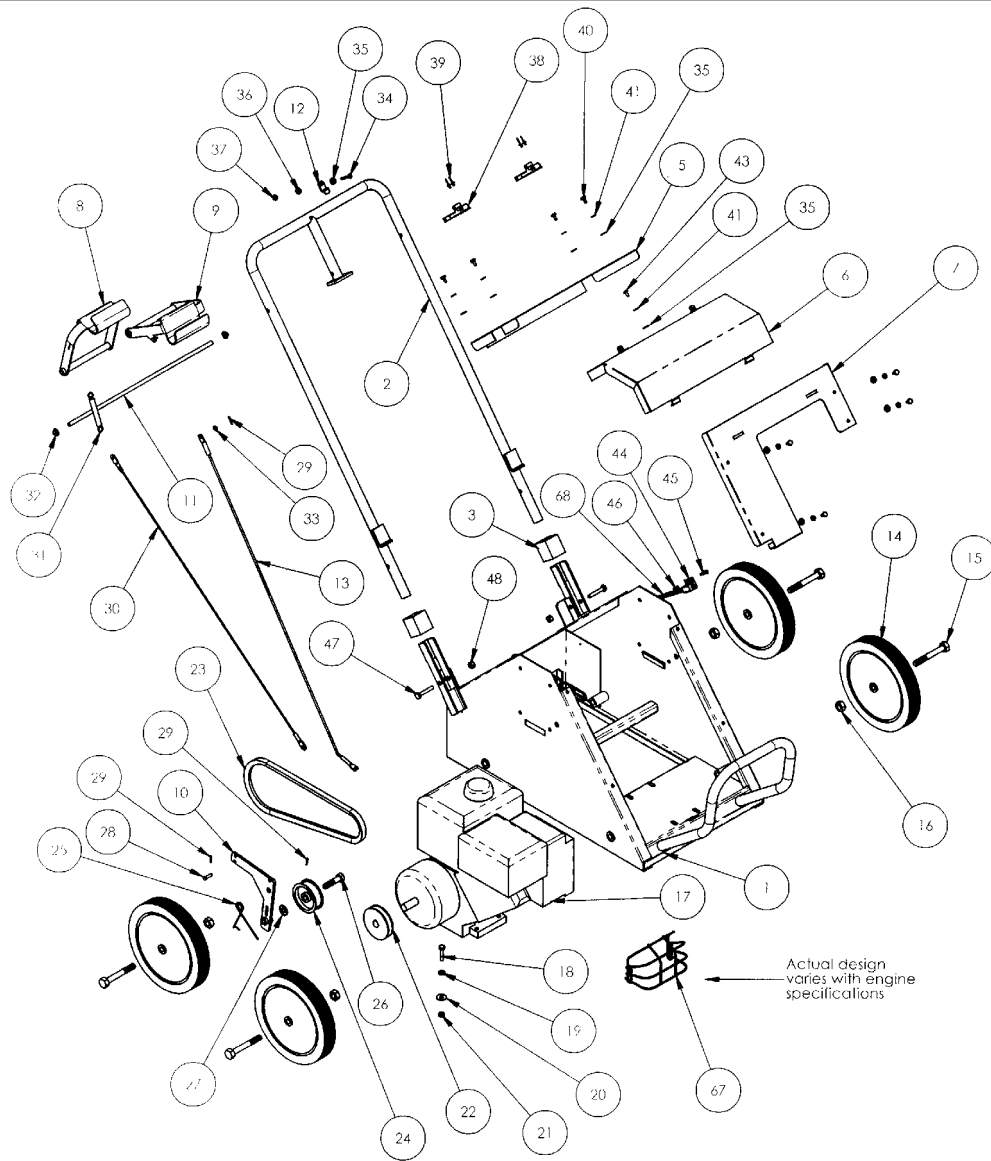
MODEL PL400



Rev E 11/01

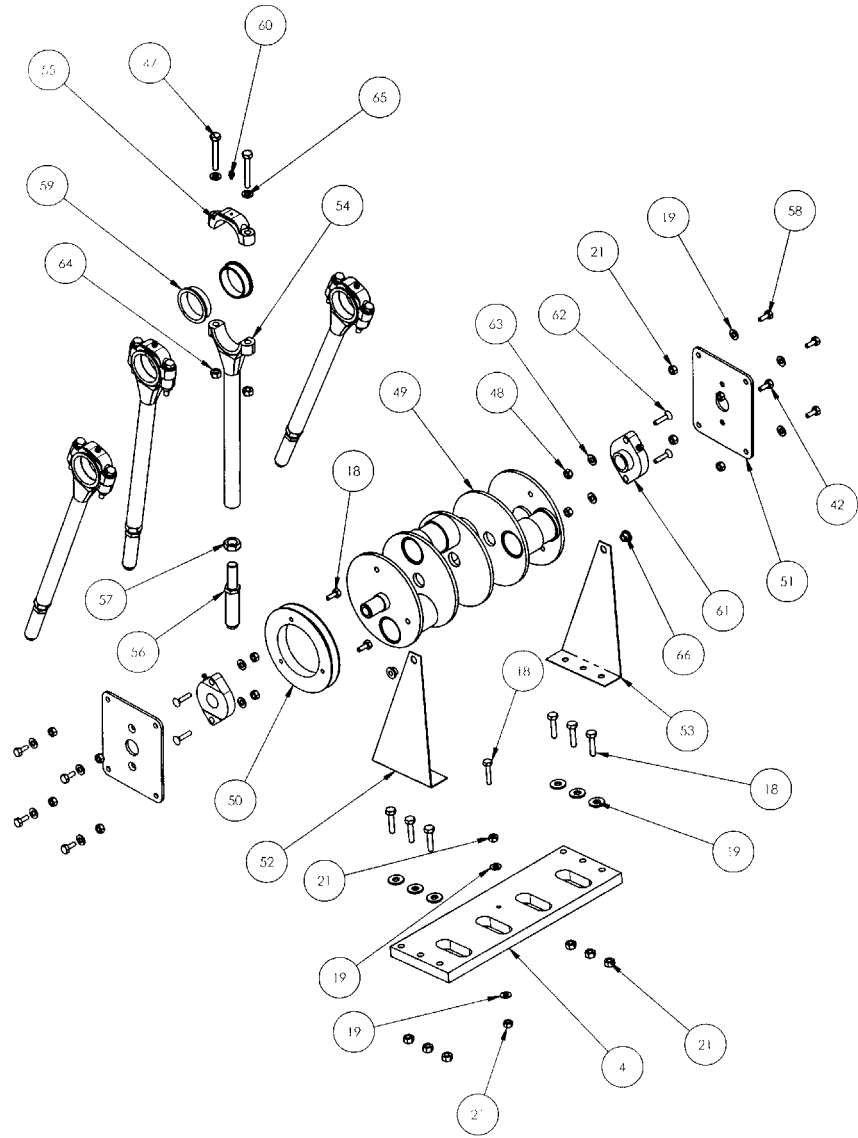
ITEM NO.	PART NO.	NO. REQ'D	DESCRIPTION	ITEM NO.	PART NO.	NO. REQ'D	DESCRIPTION
36	1100	1	Handle Lock Cam	54	1149		Special Tine 7/8" Solid
37	1077	1	Clevis Pin, 1/4 x 3/4"	54	1150		Special Tine 3/8" Tubular
38	1141	1	Shoulder Bolt, 3/8-16 UNC x 1 3/4"	54	1151		Special Tine 3/8" Solid
39	1042	2	Cartridge Bearing	54	1152		Special Tine 1 1/2" Tubular (Zoysia Plug)
40	1142	4	Hex Head Bolt, 3/8-16 UNC x 2"	55	1058	1	Spacer, Short
41	1044	4	Flat Washer, 3/8"	56	1059	3	Spacer, Long
42	1045	4	Lock Nut, 3/8-16 UNC	57	1060	2	Hanger Rod Bearing w/Bushing
43	1046	1	Pulley, Crank Shaft	58	1061	6	Jam Nut, 5/8-18 UNF
44	1047	1	Spacer Washer	59	1062	2	Hanger Rod
45	1048	12	Hex Head Bolt, 1/4-20 UNC x 1 3/4"	60	1063	4	Flat Washer, 5/8"
46	1049	8	Cam Alignment Plate	61	1097	1	Retractor Plate
47	1050	4	Tine Casting	62	1115	4	Stainless Rivet, 1/8 dia x 1/4"
48	1052	6	Grease Fitting	63	1116	4	Vibration Dampener
49	1051	4	Cam, Machined	64	1121	1	Decal Kit (11 Decals)
50	1053	5	Cam Bearing	65	1123	1	Key
51	1054	1	Woodruff Key	66	1113	2	Button Head Screw, 10-24 x 3/4"
52	1055	4	Drive Shaft	67	1114	2	Lock Nut, 10-24 UNC
53	1056	4	Hex Jam Nut, 5/8-11 UNC	68	1128	2	Hex Bolt, 3/8-16 x 1 3/4"
54	1057	4	Standard Tine, 5/8" Tubular	69	1130	1	Shut-off Switch Bracket (PL400H ONLY)
				70	1155	1	Cover Screw, 1/4-20 w/Integral Washer

Model PL410



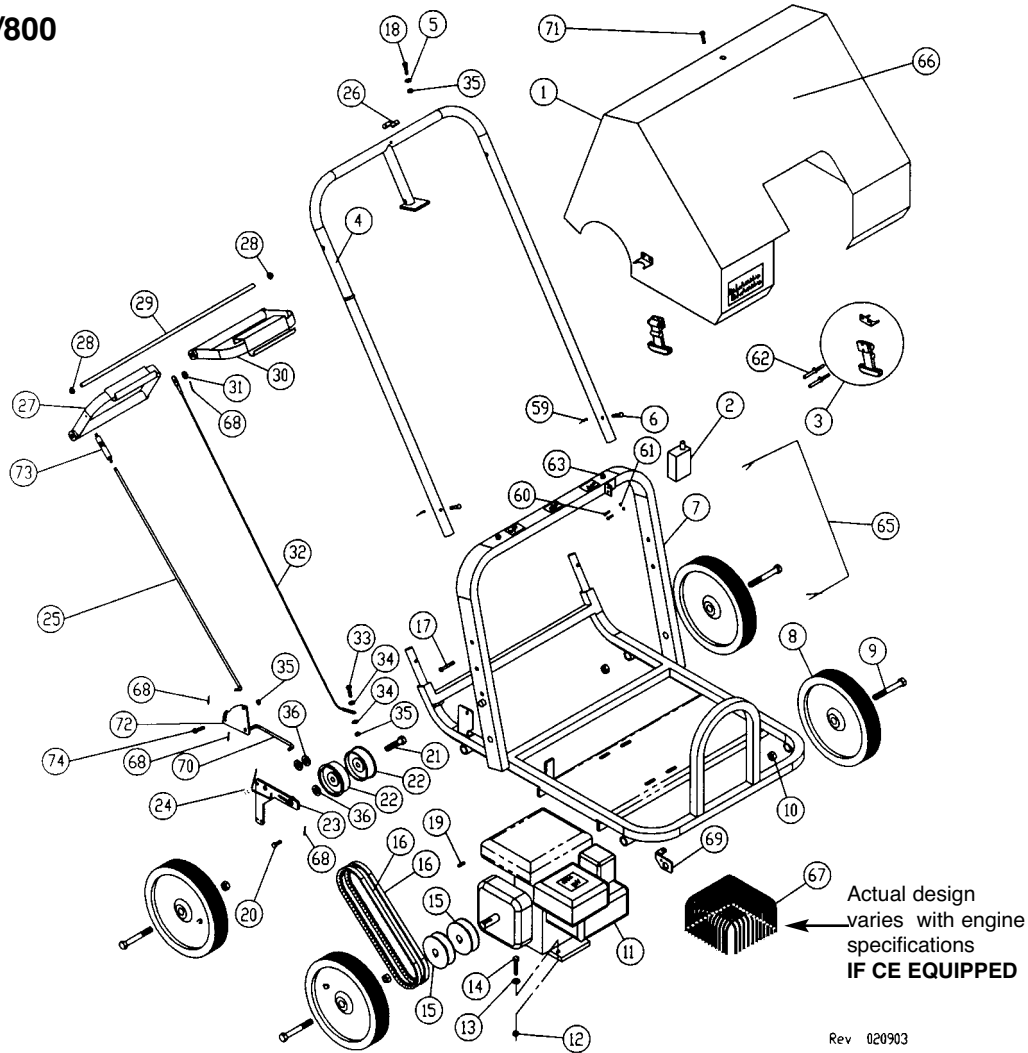
ITEM NO.	PART NO.	NO. REQ'D	DESCRIPTION	ITEM NO.	PART NO.	NO. REQ'D	DESCRIPTION
1	1162	1	Frame	19	1015	25	Flat Washer, 5/16
2	1163	1	Handle	20	1178	4	Fender Washer, 5/16
3	1135	1	Lock Collar	21	1072	25	Hex Lock Nut, 5/16-18 UNC
4	1164	1	Retractor Plate	22	1018	1	Pulley, Engine
5	1160	1	Cover, Back	23	1019	1	V-Belt, Cogged, 36"
6	1161	1	Cover, Top	24	1022	1	Pulley, Clutch
7	1159	1	Cover, Front	25	1138	1	Torsion Spring
8	1165	1	Clutch Handle	26	1024	1	Hex Head Bolt, 1/2-13 UNC x 1 3/4
9	1166	1	Retractor Handle	27	1092	1	Bushings, 1/2
10	1137	1	Clutch Bracket	28	1077	1	Clevis Pin, 1/4 dia x 5/8
11	1167	1	Pivot Rod	29	1031	2	Cotter Pin, 1/16 dia x 3/4
12	1100	1	Handle Lock Cam	30	1180	1	Clutch Cable
13	1168	1	Retractor Plate Cable	31	1157	1	Extension Spring
14	1069	4	Wheel w/ Grease Fitting	32	1085	2	Retainer Cap
15	1109	4	Hex Head Bolt, 5/8-11 UNC x 4 1/2	33	1088	1	Flat Washer, No. 10
16	1110	4	Hex Lock Nut, 5/8-11 UNC	34	1112	1	Button Head Screw, SS, 1/4-20 UNC x 1 1/2
17	107B		Engine, Briggs & Stratton 5.5HP Intek Engine, Honda 4.0HP	35	1091	9	Flat Washer, 1/4
18	1143	4	Hex Head Bolt, 5/16-18 UNC x 1 1/2				

Model PL410



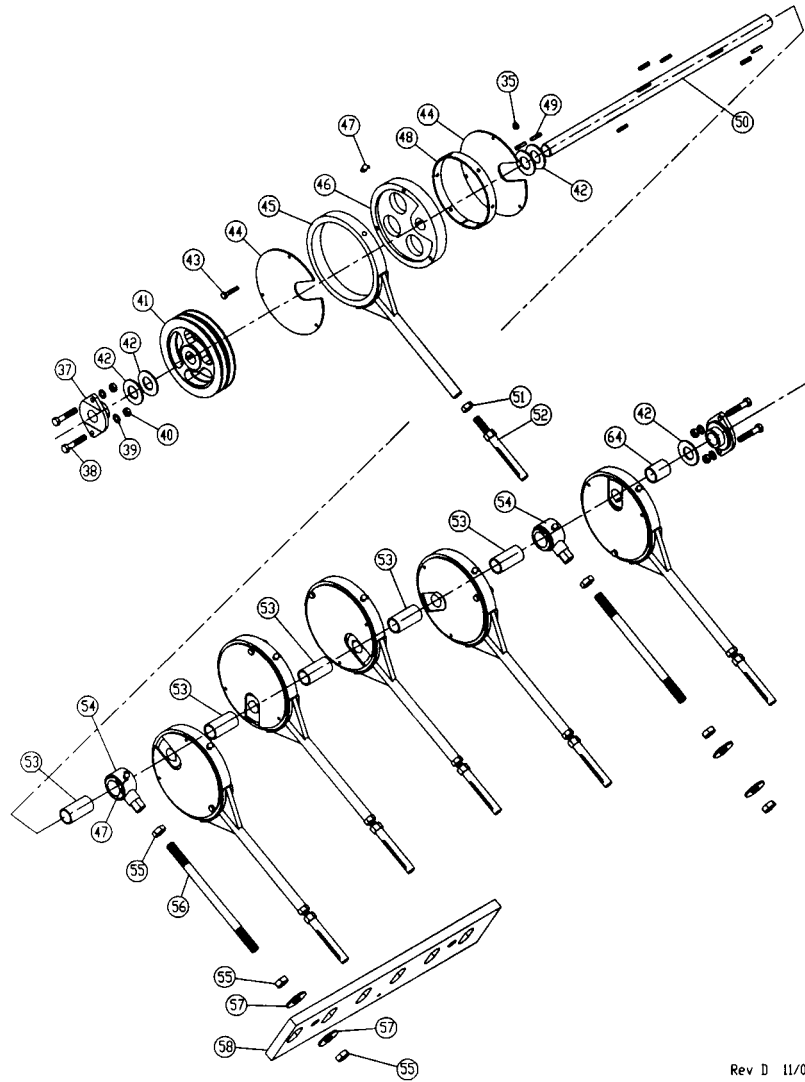
ITEM NO.	PART NO.	NO. REQ'D	DESCRIPTION	ITEM NO.	PART NO.	NO. REQ'D	DESCRIPTION
36	1111	1	Belleville Washer	53	1174	1	Pivot Bracket, L.H.
37	1029	1	Hex Nut, Nylock 1/4-20 UNC	54	1175	4	Tine Rod
38	1003	2	Rubber Latch Kit	55	1176	4	Tine Rod Cap
39	1115	4	Rivet, Stainless, 1/8 x 1/4	56	1057	4	Tine, 5/8
40	1181	8	Hex Head Bolt, 1/4-20 UNC x 1/2	57	1061	4	Hex Jam Nut, 5/8-11 UNC
41	1182	8	Split Lock Washer 1/4	58	1188	6	Hex Head Bolt, 5/16-18 UNC x 3/4
42	1184	2	Hex Head Bolt, 5/16-18 UNC x 1	59	1177	8	Journal Bearing
43	1187	1	Truss Head Screw, Philips, 1/4-20 UNC x 1/2, SS	60	1052	4	Grease Fitting
44	1129	1	Safety Switch	61	1042	2	Cartridge Bearing
45	1113	2	Button Head Cap Screw, 10-24 UNC x 3/4	62	1185	4	Flat Head Cap Screw, 3/8-16 UNC x 1
46	1114	2	Hex Lock Nut, 10-24 UNC	63	1044	4	Flat Washer, 3/8
47	1189	8	Hex Head Bolt, 3/8-16 UNC x 2 1/4"	64	1179		3/8-16 UNC, Locknut
48	1045	12	Hex Lock Nut, 3/8-16 UNC	66	1169	2	Pivot Bushing
49	1170	1	Crankshaft	67	112B		Muffler Guard, Briggs (CE Model ONLY)
50	1171	1	Pulley, Crankshaft		112H		Muffler Guard, Honda (CE Model ONLY)
51	1172	2	Bearing Plate	68	1120	1	Wiring Harness
52	1173	1	Pivot Bracket, R.H.				

Model PL600/800



ITEM NO.	PART NO.	NO. REQ'D	DESCRIPTION	ITEM NO.	PART NO.	NO. REQ'D	DESCRIPTION
		600 - 800				600 - 800	
1	1118	1	One Piece Cover	21	1078	1	Hex Head Bolt, 1/2-13 UNC x 2 1/2"
2	1129	1	Safety Switch	22	1079	1	Pulley, Clutch
3	1003	2	Rubber Latch Kit	23	1137	1	Clutch Bracket
4	1067	1	Handle	24	1138	1	Torsion Spring
5	1111	1	Belleville Washer	25	1154	1	Clutch Handle Linkage
6	1105	2	Clevis Pin 3/16 dia x 1 1/4"	26	1100	1	Handle Lock Cam
7	1068	1	Frame w/o Handle	27	1084	1	Control Handle, Right
8	1069	4	Wheel w/Grease Fitting	28	1085	2	Retainer Cap
9	1109	4	Hex Head Bolt, 5/8-11 UNC x 4 1/2"	29	1086	1	Pivot Rod
10	1110	4	Lock Nut, 5/8-11 UNC	30	1087	1	Control Handle, Left
11	107H		Engine, Honda 5.5HP OHV	31	1088	1	Flat Washer, No. 10
	108B		Engine, Briggs & Stratton 6.5HP Intek	32	1089	1	Control Cable Assembly
12	1072	5	Lock Nut, 5/16-18 UNC	33	1006	1	Hex Head Bolt, 1/4-20 UNC x 1 3/8"
13	1015	5	Flat Washer, 5/16"	34	1091	2	Flat Washer, 1/4"
14	1143	4	Hex Head Bolt, 5/16-18 UNC x 1 3/4"	35	1029	1	Nylock Nut, 1/4-20 UNC
15	1018	2	Pulley, Engine	36	1092	1	1/2" Machine Bushing
16	1073	2	V-Belt, Cogged, 38"	37	1042	2	Cartridge Bearing
17	1141	1	Shoulder Bolt, 3/8" x 1 3/8"	38	1142	4	Hex Head Bolt, 3/8-16 UNC x 2"
18	1112	1	Button Head Screw, 1/4-20 UNC x 1 1/2", SS	39	1044	4	Flat Washer, 3/8"
19	1123	1	Key	40	1045	4	Lock Nut, 3/8-16 UNC
20	1077	1	Clevis Pin, 1/4 x 3/4"	41	1093	1	Pulley, Crank Shaft, Double

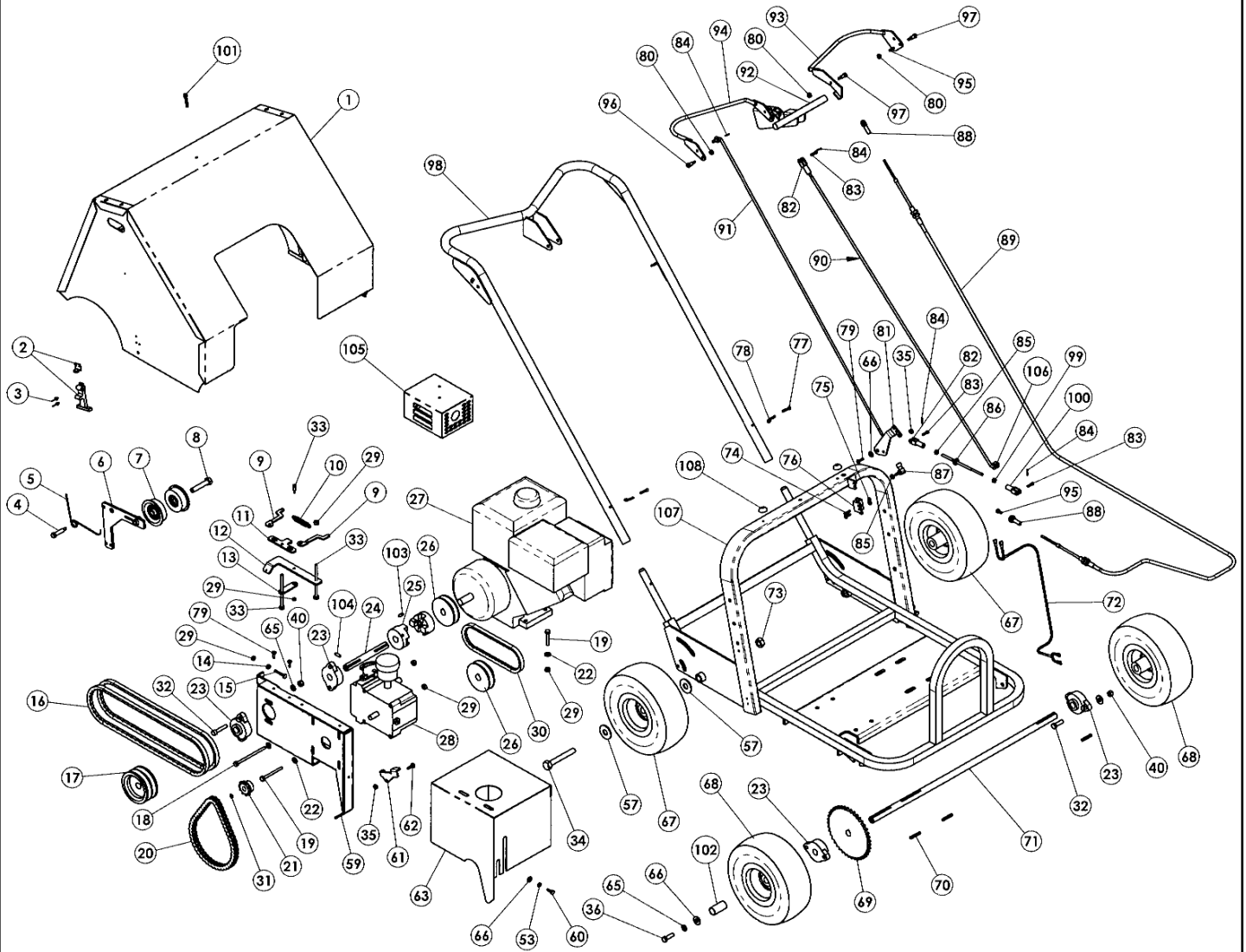
Model PL600/800



Rev D 11/01

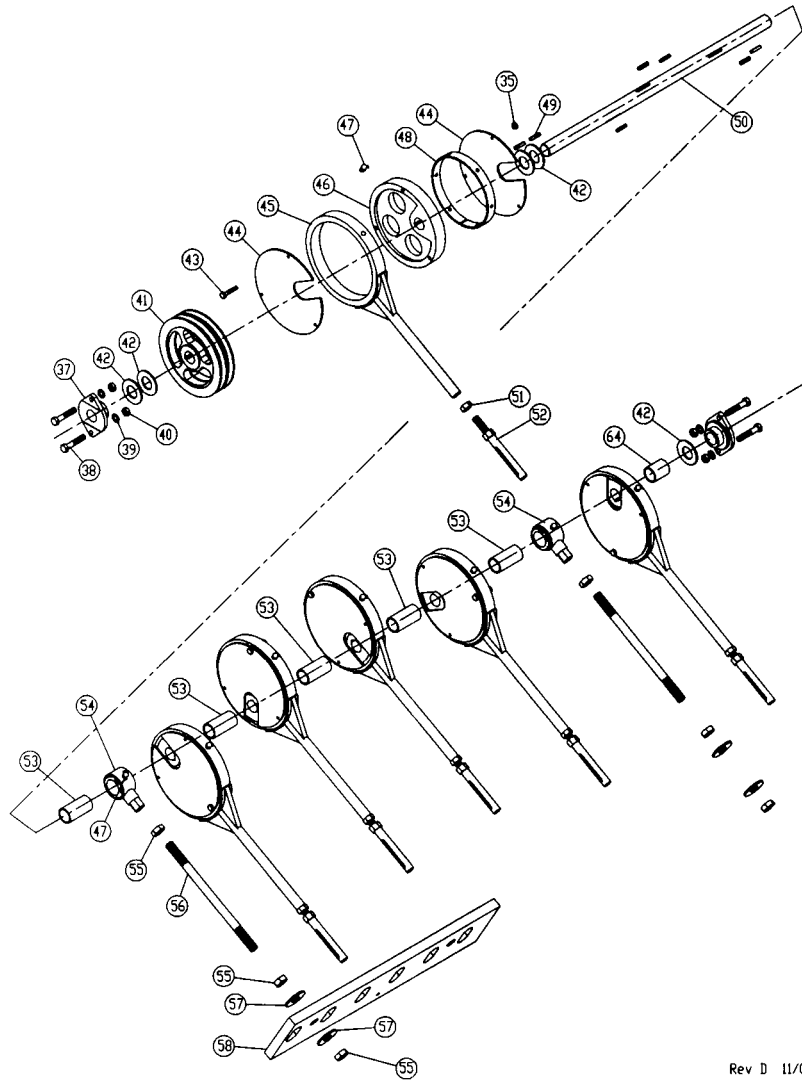
ITEM NO.	PART NO.	NO. REQ'D	DESCRIPTION	ITEM NO.	PART NO.	NO. REQ'D	DESCRIPTION
		600 - 800				600 - 800	
42	1047	4	4	58	1095	1	Retractor Plate
43	1048	18	24	59	1106	2	Hair Pin
44	1049	12	16	60	1113	2	Button Head Screw, 10-24 UNC x 3/4"
45	1050	6	8	61	1114	2	Locknut, 10-24 UNC
46	1051	6	8	62	1115	4	Stainless Rivet 1/8 dia x 1/4"
47	1052	8	10	63	1116	4	Vibration Dampener
48	1053	6	8	64	1125	1	Spacer Short
49	1054	7	9	65	1120	1	Wiring Harness
50	1094	1	1	66	1121	1	Decal Kit (11 Decals)
	1146	1	1	67	112B		CE Required Muffler Guard (Briggs & Stratton) (IF Required)
51	1056	6	8		112H		CE Required Muffler Guard (Honda) (IF Required)
52	1057	6	8	68	1031	4	Cotter Pin, 1/16 dia x 3/4"
	1149			69	1130	1	Shut-Off Switch Bracket (Honda only)
	1150			70	1156	1	Clutch Linkage
	1151			71	1155	1	Cover Screw, 1/4-20" w/Integral Washer, SS
	1152			72	1153	1	Pivot Plate
53	1059	5		73	1157	1	Extension Spring
54	1060	2	2	74	1158	1	Shoulder Bolt, 5/16 dia x 1/4"
55	1061	6	6				
56	1062	2	2				
57	1063	4	4				

Model PL850



ITEM NO.	NO. REQ'D	PART NO.	DESCRIPTION	ITEM NO.	NO. REQ'D	PART NO.	DESCRIPTION
1	1	1213	One-piece Cover	55	6	1061	Hex Jam Nut, 5/8-18 UNF
2	2	1003	Rubber Latch Kit	56	2	1062	Hanger Rod
3	4	1115	Rivet	57	8	1063	Flat Washer, 5/8"
4	1	1141	Shoulder Bolt, 3/8" x 1 3/8"	58	1	1147	Retractor Plate
5	1	1138	Torsion Spring	59	1	1200	Hydrostat Mounting Bracket
6	1	1137	Clutch Bracket	60	3	1253	Hex Head Bolt, 1/4-20 UNC x 1/2"
7	2	1079	Pulley, Clutch	61	1	1211	Hydrostat Override Lever
8	1	1078	Hex Head Bolt, 1/2-13 UNC x 2 1/2"	62	1	1252	Hex Head Bolt, 1/4-20 UNC x 3/4"
9	2	1208	Throttle Return Arm	63	1	1212	Hydrostat Guard
10	1	1222	Throttle Return Spring	64	7	1125	Spacer, Short
11	1	1209	Throttle Centering Arm	65	2	1250	Locker Washer, 3/8"
12	1	1210	Pump Throttle Actuator	66	1	1091	Flat Washer, 1/4"
13	1	1207	Retainer Link	67	2	1230	Tire, Rear
14	1	1072	Hex Nut, 5/16	68	2	1231	Tire, Front
15	1	1143	Hex Head Bolt, 5/16-18 UNC x 1 1/2"	69	1	1226	Sprocket, 43-tooth
16	2	1073	V-Belt, Cogged, 38"	70	3	1233	Key, 3/16 x 1 1/2"
17	1	1223	Pulley, Double Belt, PL850	71	1	1202	Drive Axle
18	1	1256	Hex Head Bolt, 5/16-18 UNC x 4 3/4"	72	1	1120	Wire Harness
19	5	1248	Hex Head Bolt, 5/16-18 UNC x 1 3/4"	73	2	1110	Lock Nut, 5/8-11 UNC
20	1	1224	No 40 Roller Chain	74	2	1113	Button Head Screw, 10-24 UNC x 3/4"
21	1	1225	Sprocket, 11-tooth	75	2	1114	Lock Nut, 10-24 UNC
22	6	1015	Flat Washer, 5/16"	76	1	1129	Safety Switch
23	4	1232	Flange Cartridge Bearing, 3/4"	77	2	1105	Clevis Pin, 3/16 x 1 1/4
24	1	1206	Jack Shaft	78	2	1106	Hair Pin Cotter
25	2	1220	Coupling Half	79	3	1245	Button Head, 1/4-20 UNC x 3/4"
26	1	1018	Pulley, Hydrostat	80	5	1244	Lock Nut, 1/4-20 UNC
27	1	108B	Engine, Briggs 6.5HP Intek	81	1	1214	Clutch Pivot Plate
	1	108H	Engine, Honda 6.5 HP	82	3	1234	Clevis Fitting, R.H.
28	1	1227	Pump/Gear Motor	83	3	1077	Clevis Pin, 1/4 x 3/4"
29	8	1072	Hex Lock Nut, 5/16	84	4	1031	Cotter Pin, 1/16 x 3/4"
30	1	1228	V-Belt, Cogged, 20"	85	2	1243	Hex Nut, 1/4-28 UNF
31	1	1229	Snap Ring, 7/16"	86	1	1219	Turnbuckle Arm
32	2	1249	Cap Screw, 3/8-16 UNC x 1 3/4"	87	1	1236	Quick Disconnect
33	3	1241	Hex Head Bolt, 5/16-18 x 1/2"	88	2	1237	Spherical Rod End
34	2	1255	Hex Head Bolt, 5/18-11 UNC x 4 3/4"	89	1	1239	Hydrostat Drive Cable
35	1	1029	Nylock Nut, 1/4-20 UNC	90	1	1215	Retractor Control Rod
36	2	1254	Hex Head Bolt, 3/8-16 UNC x 2 3/4"	91	1	1216	Clutch Control Rod
37	2	1042	Flange Cartridge Bearing, 1	92	1	1201	Retractor Handle
38	4	1142	Hex Head Bolt, 3/8-16 UNC x 2"	93	1	1204	Hydrostat Control Lever
39	6	1044	Flat Washer, 3/8"	94	1	1203	Clutch Control Lever
40	10	1045	Lock Nut, 3/8-16 UNC	95	2	1246	Button Head, 10-24 UNC x 1"
41	1	1093	Pulley, Crank Shaft, Double	96	4	1158	Shoulder Bolt, 5/16 dia x 1/4" Long
42	4	1047	Spacer Washer	97	1	1247	Shoulder Bolt, 5/16 dia x 3/8" Long
43	24	1048	Hex Head Bolt, 1/4-20 UNC x 1 3/4"	98	1	1205	Handle
44	16	1049	Cam Alignment Plate	99	1	1242	Hex Nut, 1/4-28 UNF - L.H.
45	8	1050	Tine Casting	100	1	1235	Clevis Fitting, L.H.
46	8	1051	Cam Machined	101	1	1155	CE Cover Screw, 1/4-20 w/ Integral Washer
47	10	1052	Grease Fitting				
48	8	1053	Cam Bearing	102	2	1221	Sleeve
49	9	1054	Woodruff Key	103	2	1240	Setscrew, 5/16-18 UNC x 1/2
50	1	1146	Drive Shaft	104	1	1251	Setscrew, 5/16-24 UNF x 3/8
51	8	1056	Hex Jam Nut, 5/8-11 UNC	105	1	112B	CE Req'd Muffler Guard (Briggs)
52	8	1057	Standard Tine, 5/8"			112H	CE Req'd Muffler Guard (Honda)
53	3	1182	Lock Washer, 1/4	106	1	1259	J-Bolt, 1/4-20 UNC x 2 5/16"
54	2	1060	Hanger Rod Bearing w/Bushing	107	1	1258	Frame w/o Handle
				108	2	1116	Vibration Dampener

Model PL850



Rev D 11/01

ITEM NO.	PART NO.	NO. REQ'D	DESCRIPTION	ITEM NO.	PART NO.	NO. REQ'D	DESCRIPTION
		850				850	
35	1029	1	Nylock Nut, 1/4-20 UNC	49	1054	9	Woodruff Key
37	1042	2	Flange Cartridge Bearing, 1	50	1146	1	Drive Shaft
38	1142	4	Hex Head Bolt, 3/8-16 UNC x 2"	51	1056	8	Hex Jam Nut, 5/8-11 UNC
39	1044	6	Flat Washer, 3/8"	52	1057	8	Standard Tine, 5/8"
40	1045	10	Lock Nut, 3/8-16 UNC	53	1182	3	Lock Washer, 1/4"
41	1093	1	Pulley, Crank Shaft, Double	54	1060	2	Hanger Rod Bearing w/Bushing
42	1047	4	Spacer Washer	55	1061	6	Hex Jam Nut, 5/8-18 UNF
43	1048	24	Hex Head Bolt, 1/4-20 UNC x 1 3/4"	56	1062	2	Hanger Rod
44	1049	16	Cam Alignment Plate	57	1063	4	Flat Washer, 5/8"
45	1050	8	Tine Casting	58	1147	1	Retractor Plate
46	1051	8	Cam, Machined	64	1125	7	Spacer Short
47	1052	10	Grease Fitting				
48	1053	8	Cam Bearing				

PLUGR



603 L Street
Lincoln NE 68508

Ask for a **FREE** Demonstration Video or View it on the Web at
www.plugr.com

Phone: 888-418-9065

Fax: 402-474-6604 or email: plugrsales@sourceonex.com

Plugr® is a registered trademark of SourceOne Inc., a subsidiary of IMSCORP, Lincoln, Nebraska